



## Instructions and Parts List

**3M-Matic™**

**800asb**                      Type 29600

**Adjustable  
Case Sealer**

**with**

**AccuGlide™ II**

**STD 1-1/2 Inch**

**Taping Heads**

Serial No. \_\_\_\_\_  
For reference, record machine serial number here.



### Important Safety Information

Read "Important Safeguards",  
pages 3-5 and also operating  
"Warnings", page 16  
**BEFORE INSTALLING OR  
OPERATING THIS  
EQUIPMENT.**

### Spare Parts

It is recommended you  
immediately order the  
spare parts listed on  
page 35. These  
parts are expected to  
wear through normal use  
and should be kept on  
hand to minimize  
production delays.

**3M Packaging Systems Division**

3M Center, Building 220-8W-01  
St. Paul, MN 55144-1000

"3M-Matic" and "AccuGlide" are Trademarks  
of 3M, St. Paul, MN 55144-1000

Litho in U.S.A

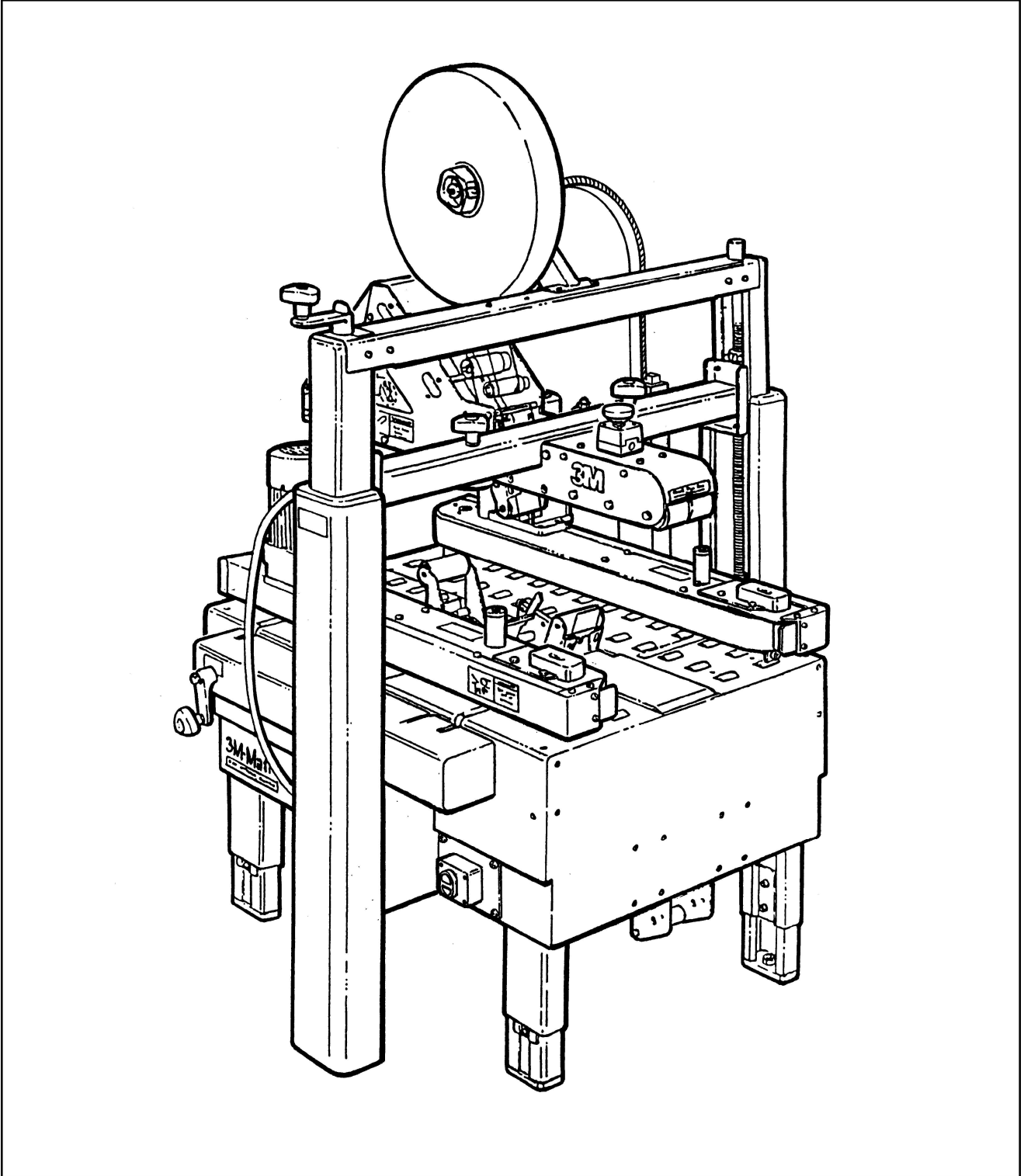
© 3M 1998 44-0009-1925-6(C28.0).

---

## Description

---

The **3M-Matic™** 800asb Adjustable Case Sealer with **AccuGlide™ II** 1-1/2 Inch Taping Heads is designed to apply a “C” clip of **Scotch™** brand pressure-sensitive film box sealing tape to the top and bottom center seam of regular slotted containers. The case sealer is manually adjustable to a wide range of box sizes (see Box Weight and Size Capacities, page 8).



**3M-Matic™** 800asb Adjustable Case Sealer, Type 29600

# Specifications

**1. Power Requirements:**

Electrical – 115 VAC, 60 Hz, 3.8 A

The machine is equipped with an 2.4 m [8 ft] standard neoprene covered power cord and a grounded plug.

Contact your 3M Representative for power requirements not listed above.

**2. Operating Rate:**

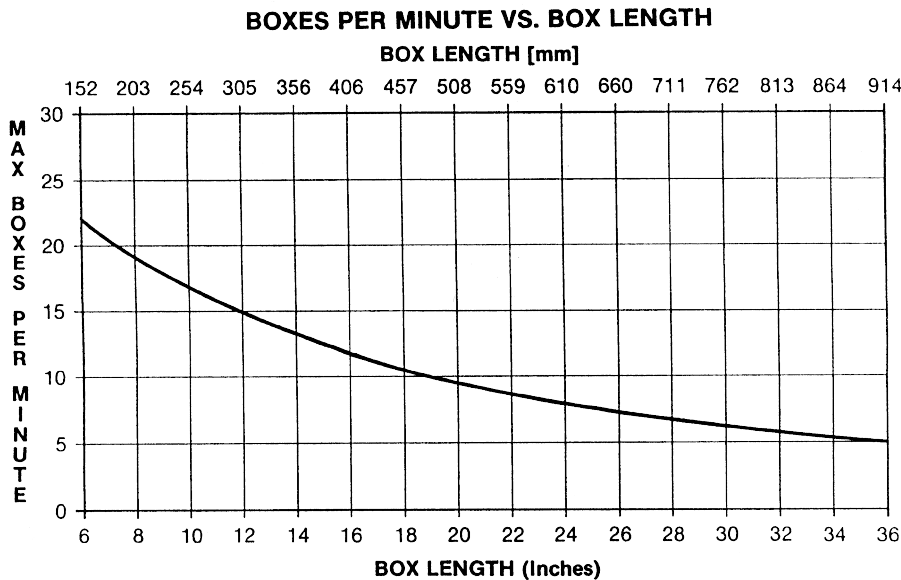
Belt speed is 0.29 m/s [57 ft/min]

**5. Tape Width:**

36 mm [1.5 in]

**6. Tape Roll Diameter:**

Up to 405 mm [16 in] maximum on a 76.2 mm [3 in] diameter core. (Accommodates all system roll lengths of **Scotch™** brand film tapes.)



Actual production rate is dependent on operator's dexterity.  
Boxes must be 18 inches [455mm] apart minimum.

**3. Operating Conditions:**

Use in dry, relatively clean environments at 5° to 40° C [40° to 105° F] with clean, dry boxes.

**Important** – Machine should not be washed down or subjected to conditions causing moisture condensation on components.

**4. Tape:**

**Scotch™** brand pressure-sensitive film box sealing tapes.

**7. Tape Leg Length (Standard):**

50 mm ± 6 mm [2 in ±.25 in]

**Tape Leg Length (Optional):**

70 mm ± 6 mm [2.75 in ±.25 in]  
(To change tape leg to 70 mm [2.75 in], see "Special Set-Up Procedures", page 28.)

**8. Box Board:**

Style – regular slotted containers – RSC  
Bursting test –125 to 275 P.S.I. single wall or double wall B or C flute.

(Specifications continued on next page)

## Specifications (Continued)

### 9. Box Weight and Size Capacities:

#### Weight

Maximum – up to 38.6 kg [85 lbs]

Minimum – contents must support top flaps and weight must be sufficient to hold bottom flaps fully closed.

#### Box Size – With standard 50 mm [2.00 in] tape leg length

##### MINIMUM

Length – 150 mm [6.00 in]  
Width – 100 mm [3.90 in]  
Height – 70 mm [2.75 in] \*

##### MAXIMUM

Length – unlimited  
Width – See Below \*\*  
Height – 570 mm [22.38 in]

#### Box Size – With optional 70 mm [2.75 in] tape leg length

##### MINIMUM

Length – 150 mm [6 in]  
Width – 140 mm [5.50 in]  
Height – 120 mm [4.75 in]

##### MAXIMUM

Length – Unlimited  
Width – 545 mm [21.50 in]  
Height – 570 mm [22.38 in]

**Note:** The case sealer is designed to accommodate most boxes complying with the 1976 FBA and PMMI\*\*\* voluntary standard "Tolerances for Top Opening" regular slotted corrugated containers (RSC). Two of the requirements of the standard are the following:

The box length is not more than twice the box width.

The box length is not more than four times the box depth.

DETERMINE THE BOX LIMITATIONS BY COMPLETING THIS FORMULA:

**Box Length In  
Direction Of Seal      Must Be Greater Than .6  
Box Height**

If any of the above criteria are not met, boxes should be test run to assure proper machine performance.

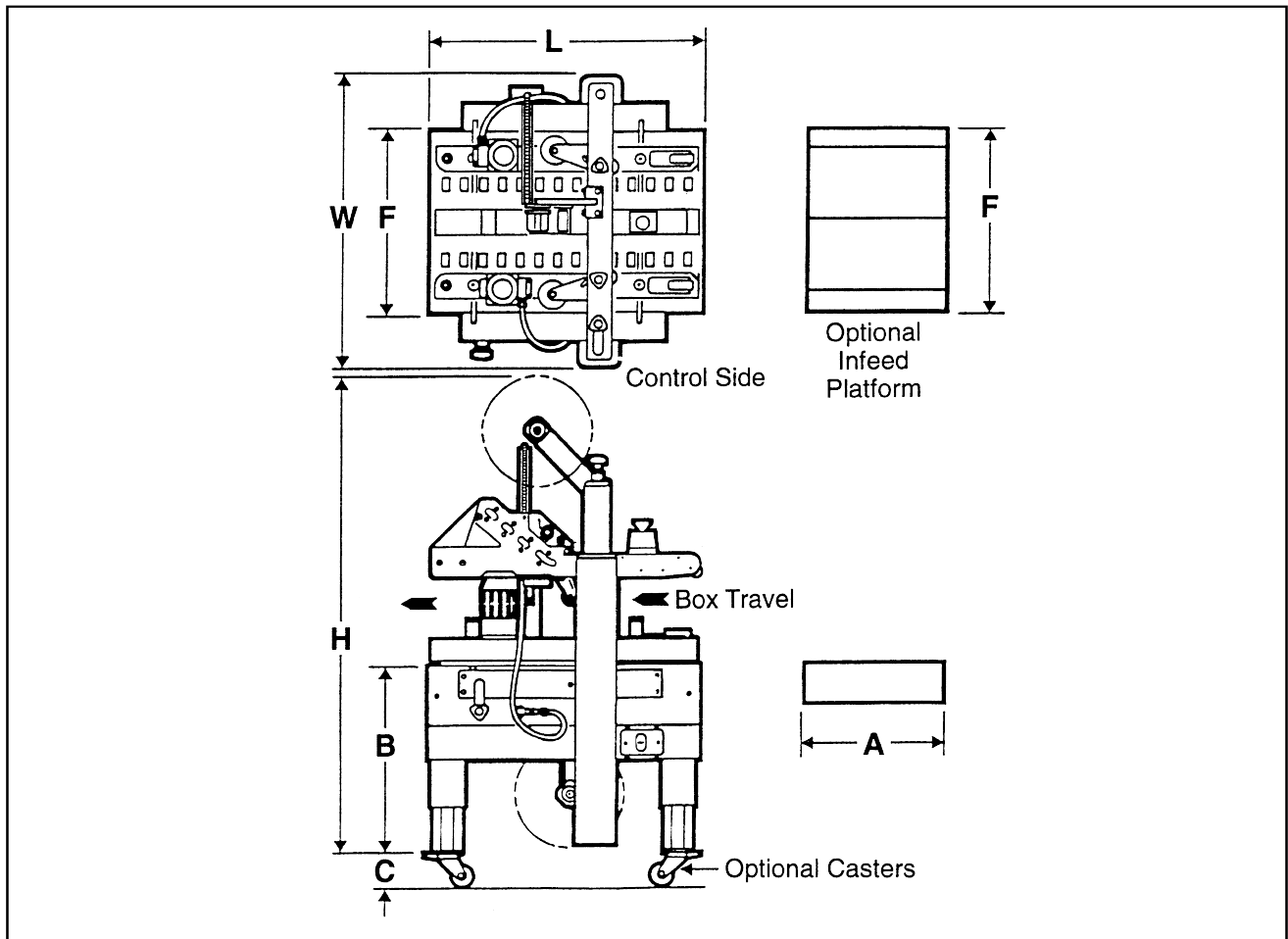
\* With outer columns relocated to upper position, minimum box height is 108 mm [4.25 in] and maximum box height is 670 mm [26.38 in]. (See "Special Set-Up Procedure – Box Height Range", page 28.)

\*\* Maximum box width is 545 mm [21.50 in] on boxes higher than 110 mm [4.25 in]. (To run boxes less than 110 mm [4.25 in] high, remove compression rollers.)

\*\*\* Fibre Box Association, Packaging Machinery Manufacturer's Association

(Specifications continued on next page.)

## Specifications (Continued)



### Machine Dimensions:

	W	L	H	A	B	C	F
<b>Minimum</b>							
mm [Inches]	980 [38.50]	920 [36.25]	1335 [52.50]	460 [18]	610 [24] *	105 [4.18]	620 [24.50]
<b>Maximum</b>							
mm [Inches]	--	--	2184 [86] *	--	890 [35] *	--	--

\* With outer columns relocated to upper position, "H" maximum dimension increases 100 mm [4 in] and "B" minimum/maximum dimension decreases by 100 mm [4 in]. (See "Special Set-Up Procedure – Box Height Range", page 28.)

Weight – approximate 170 kg [375 lbs] crated  
 approximate 152 kg [335 lbs] uncrated

### 11. Set-Up Recommendations:

- > Machine must be level.
- > Customer supplied infeed and exit conveyors (if used) should provide straight and level box entry and exit.
- > Exit conveyors (powered or gravity) must convey sealed boxes away from machine.